

NOTRE DAM

Multipurpose light-cure liquid dam

Formulation without addition of HEMA, TEGDMA, BisGMA



ADVANTAGES

Low exothermic reaction to avoid harmful reaction of the mucosa

Excellent thixotropy for an easy setting

Versatile multi-purpose

Blue for a good contrast



INDICATIONS

Restorative dentistry

To hold Teflon® film in place when luting aesthetic veneers, or making a class II composite involving the contact point.

Prosthodontic

To fill up undercuts before impression, to avoid tearing off the material

Endodontic

To insure a waterproof joint of the rubber dam around a tooth during an endodontic session.

To build temporary tooth walls during endodontic sessions, to hold the irrigating liquid in place

Bleaching

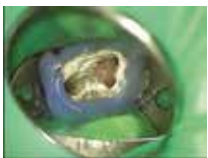
Protection of soft tissues during bleaching process

REFERENCES & PRESENTATIONS

ND- 4 2 x 1,2ml syringes + 10 tips

LTL 100 black needle tips. Gauge 20

MD : Class IIa certified by Tüv Rheinland (0197), excl. tips, Class 1.



To built temporary tooth walls



To ensure a waterproof joint between the tooth and the rubber dam



Gum protection during bleaching sessions at the chair